



**Early Life Foundations**  
Education Consultancy, Research & Parent Support



## Professional Development Early Childhood Educators

KINDY UPLIFT - Queensland

Scheduled Professional  
Development Sessions

**2024**



# Welcome to our Professional Development Program for 2024

We provide professional learning for Early Childhood Educators, Primary teachers and leadership as well as parents and your community.

*Early Life Foundations is an independent voice on the national and international stage that promotes child-focussed education, allowing each child the opportunity to thrive and flourish.*



## Professional Support

Early Life Foundations has delivered professional development and support for educators, parents, organisations and the community since 2008.



## Early Life Foundations

*Early Life Foundations has been a Victorian DoE School Readiness Funding provider since 2019 as well as a NESA Accredited provider in NSW and a Kindy UPLIFT provider in Queensland.*



## Live Webinars

We have a program of scheduled live webinar events - enjoy the opportunity to take part in Walker Learning PD without the need to travel.



## Custom Sessions & Mentoring

means we come to you (in-person or online) to present on any of the scheduled topics, or any other topics your school, centre or parents may need support in.



## Scheduled Sessions

Pre-set sessions with dates and topics, listed in our brochure and at [earlylife.com.au](http://earlylife.com.au).



## Parent Presentations

We offer evening presentations via Zoom. Visit our website to see topics. [earlylife.com.au/parent-presentations](http://earlylife.com.au/parent-presentations)

Early Life Foundations & Walker Learning

NESA Accredited Provider 2019, 2020, 2022, 2023

Victorian DoE Approved Provider SRF 2019, 2020, 2021, 2022, 2023

We look forward to meeting and working with you in 2023. Please feel free to contact Early Life Foundations to discuss your specific needs:

Contact us: [www.earlylife.com.au](http://www.earlylife.com.au) or (03) 9551 1900

# Walker Learning - Personalised & Holistic Learning Philosophy Guiding Practice

Walker Learning is an Australian designed evidence-based play and inquiry pedagogy. It is internationally acclaimed and has been implemented across Australia and worldwide for 25 years.

*Walker Learning brings together the best practice in teaching and learning and provides a seamless transition across all stages of education (babies to year 6). Professional learning, text books and online resources provides underpinning theory and step by step practical strategies on how to implement the approach. It meets all requirements of state, national and international frameworks.*

*Walker Learning is used Australia-wide by early childhood and childcare providers as well as in the early, middle and uppers years of primary school.*



## Development of the whole child

Walker Learning ensures that opportunities for the development of the whole child are authentic, relevant and meaningful for all children regardless of their age, culture, family context, socioeconomic background or geographical location.



## Personalised learning pedagogy

Walker Learning emphasises personalised learning, explicit instruction, skills in literacy and numeracy; promotes creativity and self-expression; and embeds self-awareness, self-management and self-regulation in children's learning.



## Prioritising relationships

Walker Learning embraces and prioritises the importance of attachment and relationships with children.



## Education of the whole child

Walker Learning is based on educating the whole child; education of the whole child requires understanding of child development, developmental psychology and neuroscience while acknowledging and respecting that culture, community and family have a significant impact on a child's life and learning. It places an emphasis on the social and emotional aspects of a child's life as well as the academic.

# Table of Contents



## Scheduled Professional Development Sessions

2024

## Kindy UPLIFT - Queensland

■	Early Childhood Play Matters.....	6
■	Creating Engaging Environments for Pre-Schoolers.....	7
■	Early Childhood - Teaching & Learning through Play.....	8
■	Planning and Documentation in Early Childhood.....	9
■	Certification in Walker Learning for Early Childhood Educators.....	10
■ ■	Building Resilience in Pre-Schoolers.....	11
■	Bush Kinder - Starting an Outdoor Learning Program.....	12
■ ■	Embedding Aboriginal Perspectives.....	13
■ ■	The Power of Storytelling with Aboriginal Perspectives.....	14

## Digital Badges & Micro Credentials

Certification in Walker Learning for Early Childhood Educators digital badge.....	16-18
---	-------

## 2024 National Calendar

Early Life Foundations and Walker Learning Scheduled Events.....	19-22
--	-------

- In person
- Live ONLINE webinar
- Guest presenter

EARLY CHILDHOOD  
WALKER LEARNING

LIVE  
WEBINAR

Book Webinar

### EARLY CHILDHOOD PLAY MATTERS

#### Dates

**WEBINAR**

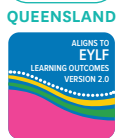
- 29/02/2024
- 15/05/2024
- 07/08/2024
- 24/10/2024

#### Australian Professional Teaching Standards

**APTS**  
1.1, 3.7, 6.4,7.3

#### National Quality Standards

**QA**  
1, 3, 5, 6, 7



Can be booked as a  
**CUSTOMISED SESSION**  
ONLINE or  
IN PERSON

This dynamic webinar will reinforce through presentation slides, expert panel discussions and audience Q&A the importance of play and intentional teaching, and how play provides essential foundations for life. It also showcases what constitutes best practice in a high-quality early childhood program.

This webinar aims to equip early childhood educators with evidence and affirmation about the value of play. It focuses on the importance of relationships; developing authentic, culturally appropriate and inclusive practice; enhancing children’s learning through ‘scaffolding’; rich, engaging environments; intentional teaching; and planning for and documenting children’s learning and development effectively. Participants explore the theory of play and learn how neuroscience informs understanding about children’s development. This session relates to the new EYLF Practices (Version 2) of incorporating intentionality in play-based learning as well as monitoring and evaluating children’s learning, development and progress against the Learning Outcomes. We will also introduce innovative ways to ‘add value’ to the teaching of literacy, numeracy, STEM, and life skills through creatively setting up learning invitations in an Early Childhood setting. *Session based on Early Childhood Play Matters by Kathy Walker & Shona Bass*

PRIORITY AREAS	Social and emotional capability	Physicality	Thinking and responding	Oral language and communication	Access and inclusion
<b>Staffing considerations</b>	Backfill: Services should consider the cost of providing backfill if required to allow educators to undertake coaching and training.				
<b>Region</b>	All Queensland				
<b>Supplier &amp; supplier contact details</b>	Early Life Foundations Nicole Mason   <a href="mailto:admin@earlylife.com.au">admin@earlylife.com.au</a>   (03) 9551 1900				
<b>Cost</b>	From \$320 excl GST per person				
<b>Website</b>	<a href="http://www.earlylife.com.au/early-childhood-play-matters">www.earlylife.com.au/early-childhood-play-matters</a>				



 Strongly aligns to Priority Area

 Partially aligns to Priority Area

EARLY CHILDHOOD  
WALKER LEARNING

LIVE  
WEBINAR

### CREATING ENGAGING ENVIRONMENTS FOR PRE-SCHOOLERS

Book Webinar

#### Dates

#### WEBINAR

- 22/02/2024
- 24/04/2024
- 24/07/2024
- 28/08/2024
- 16/10/2024
- 13/11/2024

#### Australian Professional Teaching Standards

##### APTS

1.1, 1.2, 2.1, 2.5, 3.4 6.2, 6.3

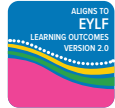
#### National Quality Standards

##### QA

1, 2, 3, 5



QUEENSLAND



Can be booked as a  
CUSTOMISED SESSION  
ONLINE or  
IN PERSON

How do we create engaging and meaningful environments that promote, engage and sustain children’s learning through play? This PD unpacks the importance of creating spaces that nurture and inspire whilst facilitating learning.

- > **The key elements of quality learning environments indoors and outdoors**
- > **Considerations for design, set up, materials, and equipment including the use of loose parts**
- > **The importance of creating physical, temporal, intellectual, social and emotional environments as well as open-ended learning spaces**
- > **Supporting children to resource their own learning**
- > **Planning for ongoing modifications and evaluation**
- > **Intentional teaching which supports communication, inclusive practice and creativity**

This PD session is suitable for teachers and educators working with children aged birth to five years of age working in early childhood settings. It is filled with lots of practical ideas on how to add a broader and richer range of materials, resources, and provocations to Play-Based learning spaces.

PRIORITY AREAS	Social and emotional capability	Physicality	Thinking and responding	Oral language and communication	Access and inclusion
Staffing considerations	Backfill: Services should consider the cost of providing backfill if required to allow educators to undertake coaching and training.				
Region	All Queensland				
Supplier & supplier contact details	Early Life Foundations Nicole Mason   <a href="mailto:admin@earlylife.com.au">admin@earlylife.com.au</a>   (03) 9551 1900				
Cost	\$310 excl GST per person				
Website	<a href="http://www.earlylife.com.au/creating-engaging-environments-for-preschoolers">www.earlylife.com.au/creating-engaging-environments-for-preschoolers</a>				



■ Strongly aligns to Priority Area

■ Partially aligns to Priority Area

EARLY CHILDHOOD  
WALKER LEARNING

LIVE  
WEBINAR

### EARLY CHILDHOOD TEACHING & LEARNING THROUGH PLAY

Book Webinar

#### Dates

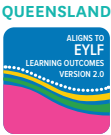
**WEBINAR**  
21/03/2024  
19/06/2024  
11/09/2024  
06/11/2024

#### Australian Professional Teaching Standards

**APTS**  
1.1, 1.2, 2.1, 2.5, 3.4 6.2, 6.3

#### National Quality Standards

**QA**  
1,3, 4, 5, 6, 7



Can be booked as a  
**CUSTOMISED SESSION**  
ONLINE or  
IN PERSON

Deepen understanding and provide inspiration to teachers, leaders and educators in Early Childhood settings. We explore the importance of reflective and responsive practice, creating quality environments, intentional teaching and observing, analysing and monitoring children’s progress in all areas. Participants will:

- > **Observe best practice in-action from a variety of Australian ECE settings.**
- > **Develop a deeper understanding of child development in the 2 to 6 year-olds.**
- > **Explore the importance of relational pedagogy and connecting with families and caregivers.**
- > **Build skills and confidence to involve and communicate effectively with parents and families.**
- > **Participants will consider equity, diversity and inclusion in their own context.**

Participants will view segments of video footage and commentary of pedagogy ‘in action’ through a virtual study tour of early childhood settings showcasing examples of play-based learning and examples of Walker Learning core elements introduced in Early Childhood Play matters. This session complements and builds wholistically on the skills and knowledge covered in Early Childhood Play Matters and Creating Engaging Environments for Preschoolers.

PRIORITY AREAS	Social and emotional capability	Physicality	Thinking and responding	Oral language and communication	Access and inclusion
<b>Staffing considerations</b>	Backfill: Services should consider the cost of providing backfill if required to allow educators to undertake coaching and training.				
<b>Region</b>	All Queensland				
<b>Supplier &amp; supplier contact details</b>	Walker Learning & Early Life Foundations Nicole Mason   <a href="mailto:admin@earlylife.com.au">admin@earlylife.com.au</a>   (03) 9551 1900				
<b>Cost</b>	\$320 excl GST per person				
<b>Website</b>	<a href="http://www.earlylife.com.au/early-childhood-teaching-learning-through-play">www.earlylife.com.au/early-childhood-teaching-learning-through-play</a>				



Strongly aligns to Priority Area

Partially aligns to Priority Area



EARLY CHILDHOOD  
WALKER LEARNING

LIVE  
WEBINAR

### PLANNING & DOCUMENTATION IN EARLY CHILDHOOD

Book Webinar

(WANT YOUR LIFE BACK? EFFECTIVE AND TIME EFFICIENT DOCUMENTATION)

#### Dates

#### WEBINAR

14/02/2024

06/06/2024

29/08/2024

15/11/2024

#### Australian Professional Teaching Standards

##### APTS

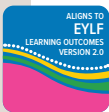
1.1, 1.2, 1.3, 1.5, 3.2, 3.4, 3.6, 3.7, 5.4, 6.4.7.3

#### National Quality Standards

##### QA

1, 3, 5, 6

THIS IS AN EARLY CHILDHOOD EDUCATOR PD



Can be booked as a CUSTOMISED SESSION ONLINE or IN PERSON

*This is suitable for teachers and educators working with children aged birth to five working in early childhood centres (prior to primary school).*

Documentation templates are included in this session.

In line with Version 2 of the EYLF, how do you currently analyse, assess, monitor and evaluate children’s learning, development and wellbeing? Join us for our online webinar which focuses on effective ways to understand, acknowledge and document children’s progress and their achievements of Learning Outcomes that doesn’t take away your weekend or interrupt your interactions with children.

In this dynamic webinar we will demonstrate through the use of presentation slides, expert panel discussion and audience Q&A how to:

- > Collect, collate and manage your records
- > Promote and plan for appropriate literacy and numeracy experiences
- > Focus on documentation and planning that enhances and supports your interactions with children
- > Document children’s learning using a practical range of strategies that link to the National Quality Framework and Assessment process EYLF version 2
- > EYLF Principles: Critical reflection and Partnership
- > EYLF Practices: Being responsive to children, planning and implementing play-based learning with intentionality, analysing and documenting children’s progress in the Learning Outcomes

PRIORITY AREAS	Social and emotional capability	Physicality	Thinking and responding	Oral language and communication	Access and inclusion
Staffing considerations	Backfill: Services should consider the cost of providing backfill if required to allow educators to undertake coaching and training.				
Region	All Queensland				
Supplier & supplier contact details	Walker Learning & Early Life Foundations Nicole Mason   <a href="mailto:admin@earlylife.com.au">admin@earlylife.com.au</a>   (03) 9551 1900				
Cost	\$290 excl GST per person				
Website	<a href="http://www.earlylife.com.au/Planning-documentation-early-childhood">www.earlylife.com.au/Planning-documentation-early-childhood</a>				



Strongly aligns to Priority Area

Partially aligns to Priority Area

EARLY CHILDHOOD  
WALKER LEARNING

LIVE  
WEBINAR

### CERTIFICATION IN WALKER LEARNING FOR EARLY CHILDHOOD EDUCATORS

Book Cohort 1 Book Cohort 2

**Dates**

**COHORT 1**

15/04/2024  
24/07/2024  
29/08/2024  
11/09/2024

**COHORT 2**

07/08/2024  
28/08/2024  
06/11/2024  
15/11/2024

Can be booked as a CUSTOMISED SESSION ONLINE or IN PERSON

KINDY UPLIFT QUEENSLAND

ALIGNS TO EYLF LEARNING OUTCOMES VERSION 2.0

**Australian Professional Teaching Standards**

APTS  
1.1, 1.2, 1.3, 1.5, 3.2, 3.4, 3.6, 3.7, 5.4, 6.4-7.3

**National Quality Standards**

QA  
1, 3, 5, 6

Start earning your digital credentials:



Our Certification in Walker Learning Micro-credential provides the earner with verified evidence of the skills achieved through digital badging. Your digital badge can be placed on a team profile, added to a website, embedded in email footers, shared on social media, and added to resumés.

Our certification pathway will broaden your knowledge and provide practical implementation strategies in play-based learning, it will promote common language, high quality delivery and consistency across practices and it will embed the knowledge, create the inspiration and give you the confidence to transform children’s experiences in the early childhood setting.

Earn Certification in Walker Learning for Early Childhood Educators by completing a 4 module pathway as follows:

**MODULE 1: Early Childhood Play Matters\*:** Based on the book Early Childhood Play Matters, this session provides a refreshing and relatable overview of early childhood best practice and brings child development and research back into focus as well as the role of the educator to build relationship and promote quality play experiences which support children from a developmental and neuroscientific viewpoint. (Social and Emotional Capability, Thinking and Responding, Oral Language and Communication). This session looks at the evidence and implications of play-based practice and encourages educators to reflect on their own perceptions and professional practice.

**MODULE 2: Creating Engaging Environments for Preschoolers\*:** This practical session presents key aspects about the importance of creating environments for children to actively explore, think, create, converse and question. Responsive and knowledgeable teachers can create learning environments which develop curiosity, cooperation, confidence, and creativity. In these spaces children can resource their own learning and transfer and adapt what they have learned. (Social and emotional capability, oral language and communication, thinking and responding). Children need plentiful opportunity to enhance their skills in open-ended, child-led inquiries in the early years to be able to manage abstract learning and problem solving more effectively in the later years of schooling. Investigative learning opportunities assist children to develop a range of skills and processes such as problem solving, inquiry, experimentation/ hypothesising (Thinking and Responding) and intentional teaching.

**MODULE 3: Early Childhood - Teaching and Learning through Play\*:** This presentation is an all encompassing look at Early Childhood play and what constitutes best practice. It includes research and practices and principles of the EYLF. The session examines wholistic child development and addresses specifically accessibility and inclusion, physicality, social and emotional capability, thinking and responding and oral language and communication. All learning and development is enhanced through adults establishing warm, nurturing responsive relationships with children and the neuroscientific research which supports this.

**MODULE 4: Planning and Documentation in Early Childhood:** Early Childhood Educators use the EYLF Framework as the basis for planning play-based programs for young children. Planning responsively and intentionally for children is important to impart quality and measure progress against learning outcomes. It also becomes a tool to share information with families and for families to share information with educators. Planning and Documentation holds the implementation of a play-based program together. It assures educators that they are assessing and documenting with clarity and purpose. It ensures all our provocations, scaffolding, extension and intervention and our relationships with children are intentional and responsive.

#### The Benefits of Certification

##### Ensuring consistency and quality practice in play education

Because QUALITY Early Childhood experiences shape lives for the better.

LIVE WEBINAR

EARLY CHILDHOOD

### BUILDING RESILIENCE IN PRE-SCHOOLERS

Book Webinar

#### Dates

**WEBINAR**  
 13/03/2024  
 12/06/2024  
 08/08/2024  
 23/10/2024

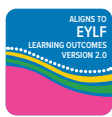
#### Australian Professional Teaching Standards

**APTS**  
 1.1, 1.3, 1.5, 4.1, 4.3, 6.2

Resilience and well-being have become more important than ever, so what can we do to build children’s resilience and self-concept? This webinar examines how to improve mental health and wellbeing and long-term outcomes for children in all areas through presentation slides and expert panel discussions. The training supports Version 2 EYLF practices of planning intentionally and responsively for children and creating supportive physical, temporal, intellectual, social & emotional play-based environments. Educators will be given strategies to understand and respond to children’s emotions and behaviour and ideas to provide environments that proactively nurture wellbeing. We review:

- > **Strong mental health foundations support positive outcomes for life and learning**
- > **What resilience is and how to build capacity to ‘bounce back’**
- > **Self-awareness, self management and responsible decision making**
- > **Techniques and resources to enhance physical, temporal and social and emotional environments**

Walker Learning consultants will immerse you in an informative and inspiring session to support wellbeing and positivity in your school and classroom. This PD is suitable for teachers and leaders wanting to enhance and support children’s social and emotional learning and well-being in early childhood.



PRIORITY AREAS	Social and emotional capability	Physicality	Thinking and responding	Oral language and communication	Access and inclusion
<b>Staffing considerations</b>	Backfill: Services should consider the cost of providing backfill if required to allow educators to undertake coaching and training.				
<b>Region</b>	All Queensland				
<b>Supplier &amp; supplier contact details</b>	Early Life Foundations Nicole Mason   <a href="mailto:admin@earlylife.com.au">admin@earlylife.com.au</a>   (03) 9551 1900				
<b>Cost</b>	\$320 excl GST per person				
<b>Website</b>	<a href="http://www.earlylife.com.au/building-resilience-in-preschoolers">www.earlylife.com.au/building-resilience-in-preschoolers</a>				



EARLY CHILDHOOD

LIVE WEBINAR

## BUSH KINDER - STARTING AN OUTDOOR LEARNING PROGRAM

Book Webinar

**Dates**

**WEBINAR**

28/02/2024

13/06/2024

14/08/2024

17/10/2024

**Australian Professional Teaching Standards**

**APTS**

4.1, 6.2

**National Quality Standards**

**QA**

1, 2, 3, 6

Come and join us for this practical, thought provoking webinar that will inform and inspire you. Through a combination of presentation slides, video, expert panel discussions, virtual walk throughs and audience Q&A we will take you on your Bush Kinder journey from the comfort of your home or work environment.

This dynamic webinar examines the importance of Bush Kinder and what you need to know to get started, including pedagogical theory, establishing routines, risk benefit assessments and resourcing Bush Kinder experiences to enhance children’s learning well-being.

This session references some of the new EYLF Principles and Practices including sustainability, equity, diversity, and inclusions along with relational pedagogy, physical, temporal, social, emotional environments and community partnerships.

This is suitable for teachers and educators working with children aged birth to five working in early childhood centres (prior to primary school)

Can be booked as a  
**CUSTOMISED SESSION**  
ONLINE or  
IN PERSON

ALIGNS TO  
**EYLF**  
LEARNING OUTCOMES  
VERSION 2.0

PRIORITY AREAS	Social and emotional capability	Physicality	Thinking and responding	Oral language and communication	Access and inclusion
<b>Staffing considerations</b>	Backfill: Services should consider the cost of providing backfill if required to allow educators to undertake coaching and training.				
<b>Region</b>	All Queensland				
<b>Supplier &amp; supplier contact details</b>	Early Life Foundations Nicole Mason   <a href="mailto:admin@earlylife.com.au">admin@earlylife.com.au</a>   (03) 9551 1900				
<b>Cost</b>	\$320 excl GST per person				
<b>Website</b>	<a href="http://www.earlylife.com.au/bush-kinder">www.earlylife.com.au/bush-kinder</a>				



EARLY CHILDHOOD

PRIMARY

WALKER LEARNING

**LIVE WEBINAR**

## EMBEDDING ABORIGINAL PERSPECTIVES

Book Webinar

---

**Dates**

**WEBINAR**

21/02/2024

15/08/2024

**Australian Professional Teaching Standards**

**APTS**

1.3, 1.4, 3.4, 3.7, 4.1, 6.2

QA 1,3,5,6

In planning for personalised, developmentally, and culturally appropriate teaching and learning, the Walker Learning pedagogy ensures that opportunities for the development of the whole child are authentic, relevant, and meaningful regardless of their age, culture, family context, socioeconomic background, or geographical location. Many teachers want to do this but may be unsure of where to start.

Join us and our guest presenters Mikayla King. Mikayla is a Kalkadoon and Dutch woman who was born on Whadjuk Country of the Noongar Nation. Her experience in education spans over a decade in various roles including Aboriginal Islander Education Officer, Classroom Teacher and Deputy Principal. Currently, Mikayla is lecturing at Edith Cowan University whilst completing her PhD. She has been recognised on a local and national level for her impact in the education realm. This professional development opportunity infuses practical experiences and stories of Mikayla's teaching experience on Whadjuk Country/Perth. The processes and theoretical frameworks can be translated to suit a range of context in consultation with traditional owners, local Aboriginal educators and cultural consultants.

In this PD, Mikayla shares her first-hand knowledge and experience with you. The Embedding Aboriginal Perspectives Professional Learning session invites critical professional reflection and provides the opportunity for educators to understand the importance of embedding Aboriginal perspectives into daily teaching practice. Supported by research and a range of examples of responsive, and appropriate resources, this session provides inspiration and practical ideas you can start using in your preschool and early primary setting with confidence. A perfect session, Australia-wide, for staff ready to address areas of inclusion and diversity as part of their professional development goals.

*Aligns to EYLF Outcome 1, 2, 3, 4, 5*

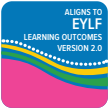
*EYLF Principles: Equity, inclusions and high expectations, Aboriginal and Torres Strait Islander perspectives, Critical reflection and ongoing professional learning*

*EYLF Practices: Valuing the cultural and social content of children and their families*

**KINDY UPLIFT**

QUEENSLAND

**GUEST PRESENTERS**



PRIORITY AREAS	Social and emotional capability	Physicality	Thinking and responding	Oral language and communication	Access and inclusion
<b>Staffing considerations</b>	Backfill: Services should consider the cost of providing backfill if required to allow educators to undertake coaching and training.				
<b>Region</b>	All Queensland				
<b>Supplier &amp; supplier contact details</b>	Early Life Foundations Nicole Mason   <a href="mailto:admin@earlylife.com.au">admin@earlylife.com.au</a>   (03) 9551 1900				
<b>Cost</b>	\$230 excl GST per person				
<b>Website</b>	<a href="http://www.earlylife.com.au/embedding-aboriginal-perspectives">www.earlylife.com.au/embedding-aboriginal-perspectives</a>				



Image by Mikayla King

- EARLY CHILDHOOD
- PRIMARY
- WALKER LEARNING

**LIVE WEBINAR**

## THE POWER OF STORYTELLING WITH ABORIGINAL PERSPECTIVES

Book Webinar

### Dates

**WEBINAR**

25/07/2024  
30/10/2024

### Australian Professional Teaching Standards

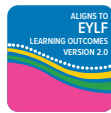
**APTS**  
1.3, 1.4, 3.4, 3.7, 4.1, 6.2  
  
QA 1

Children love to be told stories! Come and join our online yarnning circle with consultants and colleagues. Be inspired to bring stories, written by a range of Aboriginal authors to life in your school or early childhood setting in creative ways. Find out more about:

- > **Choosing suitable Fiction and Non-Fiction books**
- > **Using these books as a resource for a variety of learning opportunities**
- > **Telling stories with natural resources**
- > **Creating prop baskets for dramatisation, storytelling, and small world play**

Mikayla King is a Kalkadoon and Dutch woman who was born on Whadjuk Country of the Noongar Nation. Her experience in education spans over a decade in various roles including Aboriginal Islander Education Officer, Classroom Teacher and Deputy Principal. Currently, Mikayla is lecturing at Edith Cowan University whilst completing her PhD. She has been recognised on a local and national level for her impact in the education realm.

Learning Outcomes 1,2,3,4,5  
Version 2 EYLF Principles: Aboriginal and Torres Strait Islander perspectives  
EYLF Practice: Valuing the cultural and social culture of children and their families  
*Suitable for teachers of children aged 3-8 years in Early Childhood and Early Years of school.*



PRIORITY AREAS	Social and emotional capability	Physicality	Thinking and responding	Oral language and communication	Access and inclusion
<b>Staffing considerations</b>	Backfill: Services should consider the cost of providing backfill if required to allow educators to undertake coaching and training.				
<b>Region</b>	All Queensland				
<b>Supplier &amp; supplier contact details</b>	Early Life Foundations Nicole Mason   <a href="mailto:admin@earlylife.com.au">admin@earlylife.com.au</a>   (03) 9551 1900				
<b>Cost</b>	\$230 excl GST per person				
<b>Website</b>	<a href="http://www.earlylife.com.au/the-power-of-storytelling-with-aboriginal-perspectives">www.earlylife.com.au/the-power-of-storytelling-with-aboriginal-perspectives</a>				



<p>EARLY CHILDHOOD</p> <p>PRIMARY</p> <p>WALKER LEARNING</p>	<p><b>LIVE WEBINAR</b></p>	<h3>TAKING LEARNING OUTSIDE - PRACTICAL TECHNIQUES FOR TEACHING THE CURRICULUM OUTDOORS</h3>	<p>Book Webinar</p>
<p><b>Dates</b></p>	<p><b>Australian Professional Teaching Standards</b></p>	<p>This practical, workshop-style PD will look at taking play and investigations outside. We will look at how to engage children and enhance learning experiences outside. We will present you with practical strategies for creating outdoor learning opportunities. In this session we will:</p>	
<p><b>WEBINAR</b></p> <p>15/08/2024</p>	<p><b>APTS</b></p> <p>1.2,3.4,4.2,6.2</p>	<ul style="list-style-type: none"> <li>&gt; Discuss why learning outdoors is so beneficial to wellbeing</li> <li>&gt; Inform you of relevant research</li> <li>&gt; Develop an understanding of the benefits of incorporating loose parts into the school playground</li> <li>&gt; Share techniques to create a culture of positive behaviour and well being</li> <li>&gt; Support you to access, accumulate and incorporate a range of recycled and natural resources into your school playground</li> </ul>	
<p>Can be booked as a CUSTOMISED SESSION ONLINE or IN PERSON</p>	<p>We will be introducing Niki Buchan, our expert outdoor learning consultant, who will provide plenty of practical tips and suggestions to help you integrate learning outdoors into your daily teaching practice. Topics will include:</p>		
<p><b>GUEST PRESENTERS</b></p>	<ul style="list-style-type: none"> <li>&gt; Rethinking learning spaces – your outdoor classroom</li> <li>&gt; Investigative play</li> <li>&gt; Urban outdoor activities</li> <li>&gt; Problem-solving &amp; creative thinking</li> <li>&gt; Strategies for supporting literacy, numeracy, and STEM curriculum objectives</li> </ul>		
<p>In addition, we will also bring you Landscape Designer, Jenn Reed who will provide a host of practical strategies for developing your outdoor space with budget in mind and how to maximise opportunities for grants to further enhance the space.</p>			
<p>PD suitable for leaders, teachers, and educators in Primary School (Children 5-12 years of age)</p>			

### EARLY LIFE FOUNDATIONS

Customised sessions for your team or families can be delivered Online or Face to Face.

### CUSTOMISED SESSIONS

Our experienced Early Childhood education consultants can deliver professional learning for your team either online or at your centre/organisation. We can present any of our workshops or can customise our professional learning to meet your specific needs. Several of these sessions are Kindy UPLIFT supported in Queensland.

In addition, we can support your community with parent presentations on topics such as behaviour, school readiness, school preparation and transition, resilience, the importance of play and a range of other topics for parents. Customised parent sessions and workshops can be held via Zoom or at your location\* (\*minimum numbers required for in person presentations).

**Contact Us to discuss your needs and to arrange a quote for either customised professional development for your team or parent presentation opportunities.**

# Digital Badges and Micro-credentials



Early Childhood and  
Primary Educators

2024



# 2024 Scheduled Professional Development Sessions

EARLY CHILDHOOD & PRIMARY EDUCATORS

DIGITAL BADGES  
& MICRO-  
CREDENTIALS

## Digital Badges and Micro-Credentials

Start earning your digital credentials and showcase your verified skills and achievements.

You can earn a credential for participating in our program of professional development and completing a modular pathway of professional learning. If you are working towards Accreditation, you will also receive individualised coaching and provide verification of the implementation of Walker Learning in your classroom and/or school.

### What are Digital Badges?

Digital credentials or digital badges are a representation of an achievement verified by a trusted source. Digital badges are embedded with metadata that outlines the skills acquired, the meaning and the outcome of the digital credential.

Your verified Walker Learning or Early Life Foundations digital badge provides a complete and up to date sharable record of your professional capabilities associated with the Walker Learning Pedagogy.

### Why are Digital Badges useful?

Digital badges enable the recipient to build personalised professional portfolios of achievements that showcase competencies that are easily verifiable.

Badges allow the sharing of new skills, abilities, and knowledge with the recipient's network online that is simple, trusted and can be easily verified in real time. Your badges provide colleagues and employers with concrete evidence of what you had to do to earn the credential.

### Walker Learning Digital Badges?

**Certification in Walker Learning:** For those aiming for Certification in Walker Learning, simply complete the module pathway of professional development relevant to the year group you are teaching.

**Accreditation in Walker Learning:** In addition to completing the pathway of professional learning, you will receive personalised coaching. Those being Accredited will demonstrate a deep understanding and application of the Pedagogy.

## Walker Learning and Early Life Foundations Digital Credentials



### How to claim your digital credentials.

Follow our step-by-step guide and start on your pathway to earning and using Early Life Foundations and Walker Learning Digital Credentials.

#### Learn

Complete the modular pathway relevant to the achievement you are aiming for. Complete mentoring and review by a Walker Learning consultant if you are on your Accreditation journey.

#### Claim

Once you've earned a badge, you'll receive a confirmation email from Early Life Foundations and a notification from Credly (our digital badge platform) with instructions on how to set up your account, claim, and share your badge.

#### Share

Let your network know about your new credential by showcasing it. You can share your digital badge on LinkedIn, Facebook, Twitter, and via email. You can embed it in your resume, website, and email signature.

# 2024 Scheduled Professional Development Sessions

EARLY CHILDHOOD EDUCATORS

CERTIFICATION  
IN WALKER  
LEARNING

## Micro-credentials in Walker Learning Certification in Walker Learning for Early Childhood

Walker Learning and Early Life Foundations micro-credentials provide the earner with verified evidence of the skills achieved through digital badging. Your digital badge can be placed on a team profile, added to a website, embedded in email footers, shared on social media, and added to digital documents.

Because **QUALITY** Early Childhood experiences shape lives for the better.

Our Certification Pathway will:



Broaden and embed knowledge to learn practical implementation strategies in play-based learning.



Promotes common language, high-quality delivery, and consistency across practices.



Create the inspiration, and give you the confidence to transform children's experiences in the early childhood setting.

Walker Learning is an intentional teaching and learning approach for children from birth to 12 years of age.

Walker Learning Pedagogy matches children's development and personalises learning:

In **EARLY CHILDHOOD**, Walker Learning places emphasis on relationships, open-ended experiences and intentional teaching through **PLAY**. Our effective and time-efficient planning and documentation provides the structure to achieve this and links to the EYLF version 2.

In the **EARLY PRIMARY YEARS**, Walker Learning provides innovative ways to add value to the teaching of literacy and numeracy, STEM and life skills. It creates opportunities for children to explore their learning through Investigations that springboard into explicit teaching.

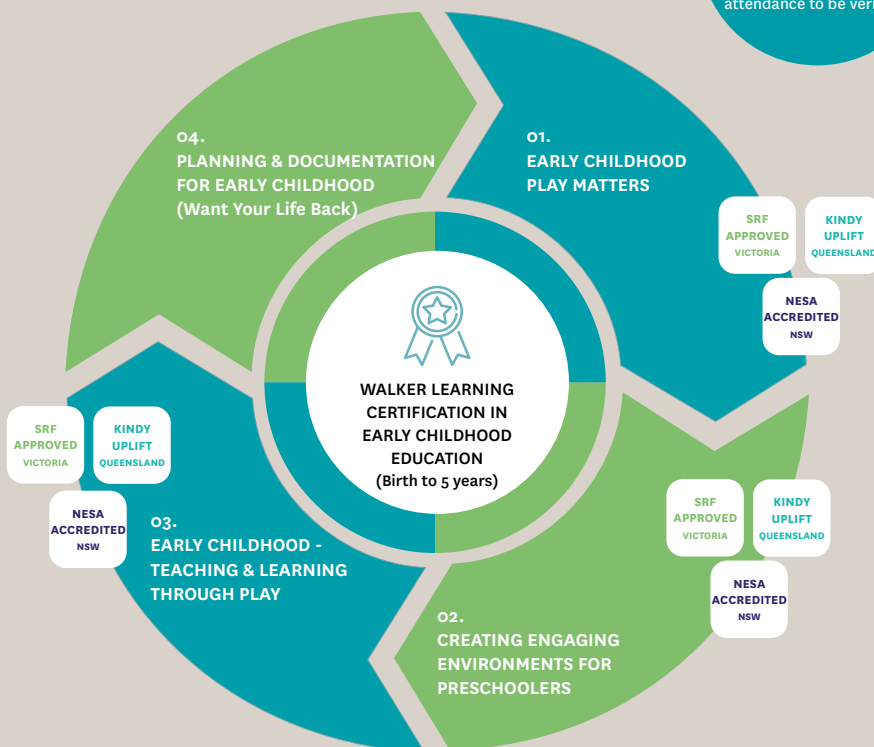
In the **MIDDLE AND UPPER PRIMARY YEARS**, Walker Learning provides a range of strategies to engage students including research projects that complement and add value to explicit teaching and learning in all curricular areas. It also develops learners who are critical and innovative thinkers.

## Certification in Walker Learning Early Childhood Education (Birth to 5 years)

**BECOME CERTIFIED**

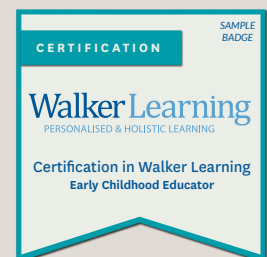
Complete 4 modules

Certification requires attendance to be verified.



The Benefits of Certification  
Ensuring consistency and quality practice in play education

Start earning your digital credentials:



EARN THIS BADGE  
Certification

Please refer to our website for more information on Digital Badges -

[CLICK HERE](#)

Book any session from our scheduled events or contact us to book a custom sessions for your centre.

# 2024 SCHEDULED PROFESSIONAL DEVELOPMENT SESSIONS

## PRIMARY & EARLY CHILDHOOD EDUCATORS

January			
Jan 23, 24	Online webinar	Walker Learning Professional Development Option 1 - January Intensive (F-2)	Walker Learning
Jan 23, 24, 25	Online webinar	Walker Learning Professional Development Option 2 - January Intensive (F-2)	Walker Learning
Jan 24, 25	Online webinar	Walker Learning Professional Development Option 3 - January Intensive (F-2)	Walker Learning
Jan 23, 25	Online webinar	Walker Learning Professional Development Option 4 - January Intensive (F-2)	Walker Learning
Jan 25	Online webinar	Walker Learning Professional Development Option 5 - January Intensive (F-2)	Walker Learning

February			
Feb 7	Online webinar	Walker Learning - Fast Track (F-2) Twilight time slot	Walker Learning
Feb 8	Online webinar	Walker Learning - Fast Track (3-6) Twilight time slot	Walker Learning
Feb 14	Online webinar	Want Your Life Back? Effective & Time Efficient Documentation (Early Childhood)	Early Childhood
Feb 21	Online webinar	Embedding Aboriginal Perspectives	Early Childhood Walker Learning
Feb 22	Online webinar	Creating Engaging Environments for Pre-Schoolers (School Readiness Funding & Kindy UPLIFT)	Early Childhood Walker Learning
Feb 22	Online webinar	Walker Learning - Fast Track (F-2)	Walker Learning
Feb 22	Online webinar	Walker Learning Fast Track (3-6)	Walker Learning

March			
Mar 5	Online webinar	Walker Learning Planning & Documentation (F-2)	Walker Learning
Mar 5	Online webinar	Linking Literacy, Numeracy and Subject Areas to Investigations (F-2)	Walker Learning
TBC	TBC	Walker Learning - STUDY TOUR (F-2)	Walker Learning
Mar 13	Online webinar	Building Resilience in Pre-Schoolers (School Readiness Funding & Kindy UPLIFT)	Early Childhood
Mar 20	Online webinar	Understanding and Responding to Children's Behaviour	Early Childhood
Mar 21	Online webinar	Early Childhood - Teaching & Learning through Play (School Readiness Funding & Kindy UPLIFT)	Early Childhood
TBC	TBC	Walker Learning STUDY TOUR (F-2)	Walker Learning
TBC	TBC	Walker Learning STUDY TOUR (3-6)	Walker Learning

April			
Apr 23	Online webinar	Walker Learning Planning & Documentation (3-6)	Walker Learning
Apr 23	Online webinar	Education Research projects (3-6)	Walker Learning
Apr 24	Online webinar	Creating Engaging Environments for Pre-Schoolers (School Readiness Funding & Kindy UPLIFT)	Early Childhood Walker Learning

May			
TBC	TBC	Walker Learning STUDY TOUR (K-2)	Walker Learning
May 2	Online webinar	Walker Learning OVERVIEW (3-6)	Walker Learning
May 3	VIC	Bush Kinder - Starting an Outdoor Learning Program (School Readiness Funding - Victoria)	Early Childhood
May 15	Online webinar	Early Childhood Play Matters (School Readiness Funding & Kindy UPLIFT)	Early Childhood
May 16	Online webinar	Introducing a Nature Pedagogy (F-2)	Walker Learning
May 22	Online webinar	Ready, Set Go! Is this child ready for Kindergarten or School?	Early Childhood
May 23	Online webinar	The Power of Storytelling with Aboriginal Perspectives	Early Childhood Walker Learning
TBC	TBC	Walker Learning STUDY TOUR (F-2)	Walker Learning
TBC	TBC	Walker Learning STUDY TOUR (F-2)	Walker Learning

June			
June 6	Online webinar	Want Your Life Back? Effective & Time Efficient Documentation (Early Childhood)	Early Childhood Walker Learning
June 12	Online webinar	Building Resilience in Pre-Schoolers (School Readiness Funding & Kindy UPLIFT)	Early Childhood
TBC	TBC	Walker Learning STUDY TOUR (F-2)	Walker Learning
June 13	Online webinar	Bush Kinder - Starting an Outdoor Learning Program (School Readiness Funding & Kindy UPLIFT)	Early Childhood
TBC	TBC	Walker Learning STUDY TOUR (F-2)	Walker Learning
June 19	Online webinar	Early Childhood - Teaching & Learning through Play (School Readiness Funding & Kindy UPLIFT)	Early Childhood Walker Learning

# 2023 SCHEDULED PROFESSIONAL DEVELOPMENT SESSIONS

## PRIMARY & EARLY CHILDHOOD EDUCATORS

## CALENDAR

### July

TBC	TBC	Walker Learning STUDY TOUR (F-2)	Walker Learning
July 24	Online webinar	Creating Engaging Environments for Pre-Schoolers (School Readiness Funding & Kindy UPLIFT)	Early Childhood Walker Learning
July 25	Online webinar	Teaching Sustainability, Seasons and Science with Aboriginal Perspectives	Early Childhood Walker Learning

### August

Aug 7	Online webinar	Early Childhood Play Matters (School Readiness Funding & Kindy UPLIFT)	Early Childhood Walker Learning
TBC	TBC	Walker Learning STUDY TOUR (F-2)	Walker Learning
TBC	TBC	Walker Learning STUDY TOUR (F-2)	Walker Learning
Aug 8	Online webinar	Building Resilience in Pre-Schoolers (School Readiness Funding & Kindy UPLIFT)	Early Childhood
Aug 14	Online webinar	Bush Kinder - Starting an Outdoor Learning Program (School Readiness Funding & Kindy UPLIFT)	Early Childhood
Aug 15	Online webinar	Taking Learning Outside - Practical Techniques for Teaching the Curriculum Outdoors	Early Childhood Walker Learning
Aug 15	Online webinar	Embedding Aboriginal Perspectives (Kindy UPLIFT)	Walker Learning Early Childhood
Aug 21	Online webinar	Walker Learning Planning & Documentation (F-2)	Walker Learning
Aug 21	Online webinar	Linking Literacy, Numeracy and Subject Areas to Investigations (F-2)	Walker Learning
Aug 28	Online webinar	Creating Engaging Environments for Pre-Schoolers (School Readiness Funding & Kindy UPLIFT)	Early Childhood Walker Learning
Aug 29	Online webinar	Want Your Life Back? Effective & Time Efficient Documentation (Early Childhood)	Early Childhood Walker Learning

### September

Sept 5	VIC	Bush Kinder - Starting an Outdoor Learning Program (School Readiness Funding - Victoria)	Early Childhood
TBC	TBC	Walker Learning STUDY TOUR (F-2)	Walker Learning
Sept 11	Online webinar	Early Childhood - Teaching & Learning through Play (School Readiness Funding & Kindy UPLIFT)	Walker Learning Early Childhood

### October

Oct 15	Online webinar	Introducing a Nature Pedagogy	Walker Learning
TBC	TBC	Walker Learning STUDY TOUR (P-2)	Walker Learning
TBC	TBC	Walker Learning STUDY TOUR (3-6)	Walker Learning
Oct 16	Online webinar	Creating Engaging Environments for Pre-Schoolers (School Readiness Funding & Kindy UPLIFT)	Early Childhood Walker Learning
Oct 17	Online webinar	Bush Kinder - Starting an Outdoor Learning Program (School Readiness Funding & Kindy UPLIFT)	Early Childhood
Oct 23	Online webinar	Building Resilience in Pre-Schoolers (School Readiness Funding & Kindy UPLIFT)	Early Childhood
Oct 24	Online webinar	Early Childhood Play Matters (School Readiness Funding & Kindy UPLIFT)	Early Childhood Walker Learning
Oct 30	Online webinar	The Power of Storytelling with Aboriginal Perspectives	Early Childhood Walker Learning
Oct 31	Online webinar	Walker Learning VIRTUAL STUDY TOUR (F-2)	Walker Learning
TBC	TBC	Walker Learning STUDY TOUR (F-2)	Walker Learning

### November

Nov 6	Online webinar	Early Childhood - Teaching & Learning through Play (School Readiness Funding & Kindy UPLIFT)	Early Childhood Walker Learning
Nov 7	Online webinar	Play Matters - A Walker Learning Overview	Walker Learning
Nov 7	Online webinar	Creating Engaging and Intentional Learning Environments	Walker Learning
Nov 8	VIC	Bush Kinder - Starting an Outdoor Learning Program (School Readiness Funding & Kindy UPLIFT)	Early Childhood Walker Learning
Nov 12	Online webinar	Walker Learning - Fast Track (3-6) Twilight time slot	Walker Learning
Nov 13	Online webinar	Creating Engaging Environments for Pre-Schoolers (School Readiness Funding & Kindy UPLIFT)	Early Childhood Walker Learning
Nov 14	Online webinar	Walker Learning Planning & Documentation (F-2)	Walker Learning
Nov 14	Online webinar	Linking Literacy, Numeracy and Subject Areas to Investigations (F-2)	Walker Learning
Nov 15	Online webinar	Want Your Life Back? Effective & Time Efficient Documentation (Early Childhood)	Early Childhood Walker Learning
Nov 21	Online webinar	Walker Learning Virtual STUDY TOUR (3-6)	Walker Learning

# Professional Development Schedule

## Scheduled Sessions

Scheduled sessions are listed in this brochure or on our website ([www.earlylife.com.au](http://www.earlylife.com.au)). Scheduled sessions are available to early childhood and primary educators and we have a number of sessions hosted by guest speakers.

## Customised Sessions

### For your school or community

To discuss your needs and/or costs related to a customised professional development or parent session please send your "expression of interest" via [www.earlylife.com.au/contact-us](http://www.earlylife.com.au/contact-us) or call the office on (03) 9551 1900.

*\* All scheduled sessions can be booked as customised sessions*

### Costs for Scheduled Sessions

BOOK ONLINE  
[earlylife.com.au](http://earlylife.com.au)

#### SCHEDULED SESSIONS\*

> Half day: \$230 - \$320 + GST

#### STUDY TOURS\*

> One day Study Tour (in person): \$430 + GST

> Virtual Study Tour (LIVE online): \$410 + GST

*\*All in person full-day sessions include morning tea and lunch*

#### GUEST SPEAKER EVENTS

> Half day: \$230 - \$320 + GST

> Whole day: \$395 - \$550 + GST

### Customised Session Topics

Contact Us  
to BOOK

- > Coaching for early childhood educators and leaders
- > Mentoring on Walker Learning (personalised learning) (F - Years 6/7)
- > Mentoring for school leaders
- > Parent information sessions
- > Inquiry and Play-based learning
- > Any topics we offer as scheduled sessions

**Cancellation Policy:** Rescheduling of bookings can be made up to 21 working days prior to the event date. An attendees name may be substituted at anytime by emailing: [registrations@earlylife.com.au](mailto:registrations@earlylife.com.au). On occasion, details of sessions may change, please ensure all personal details are correct when you complete your online registration form.

## Parent Information Sessions

### For your community - Live online via Zoom or we can come to you!

We offer parenting sessions and workshops on behaviour, school readiness, school preparation and transition, resilience, the importance of play and a range of other topics for parents. Customised parent sessions and workshops are held via Zoom. To make an enquiry, please contact us via [www.earlylife.com.au/contact-us](http://www.earlylife.com.au/contact-us) or call the office on (03) 9551 1900. Online sessions include IT support.

Contact us for a quote.

## Teacher Resources

Text books and professional learning provide underpinning theory and step by step practical strategies on how to implement the approach. Meets all requirements of state, national and international frameworks.

PUBLISHED BY ACER PRESS



## Contact Us

### MELBOURNE OFFICE

Phone: (03) 9551 1900

[admin@earlylife.com.au](mailto:admin@earlylife.com.au)

[www.earlylife.com.au](http://www.earlylife.com.au)

### PERTH OFFICE

Phone: 0415 649 828

BOOKINGS: [www.earlylife.com.au](http://www.earlylife.com.au)

ENQUIRIES: (03) 9551 1900

Find us on social media



A.B.N. 72 621 644 746